

GREEN CRUISE PORT Project

Development of Sustainability in Cruise Port Locations

Ingo Fehrs, Hamburg Port Authority

November 10th, 2016
Helsinki / Finland



Development of Sustainability in Cruise Port Locations



GREEN CRUISE PORT

Interreg
Baltic Sea Region



GREEN CRUISE PORT

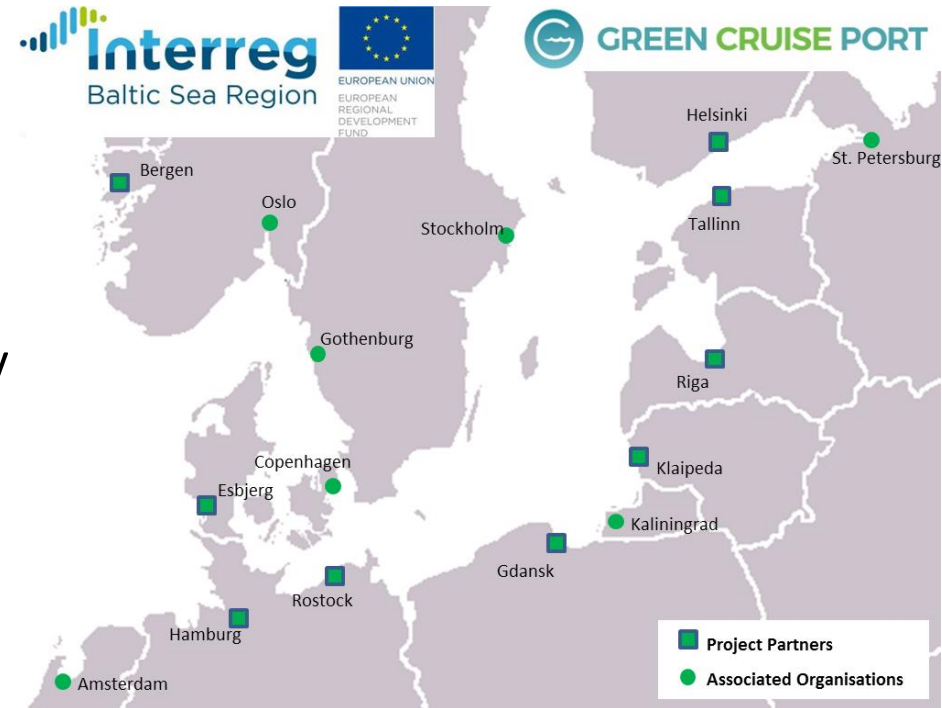


GREEN CRUISE PORT

Development of Sustainability in Cruise Port Locations

Full Partner

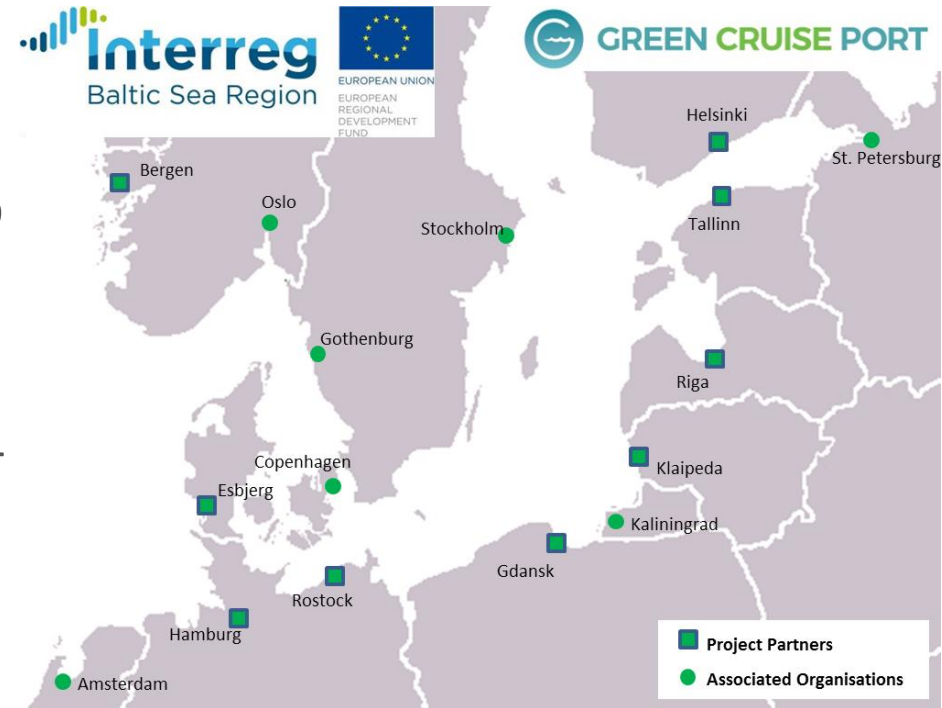
1. Hamburg Port Authority
2. Hamburg Cruise Center e.V.
3. Rostock Port
4. Freeport of Riga Authority
5. Port of Tallinn
6. Klaipeda State Seaport Authority
7. Maritime Institute Gdansk
8. Port of Helsinki
9. Port of Bergen
10. Port of Esbjerg



Development of Sustainability in Cruise Port Locations

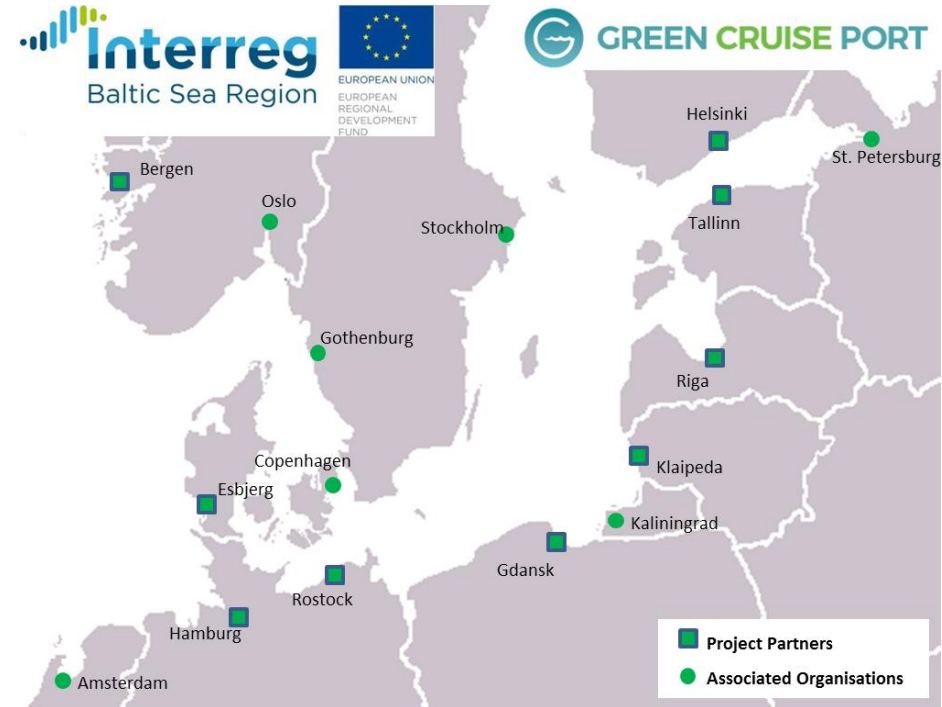
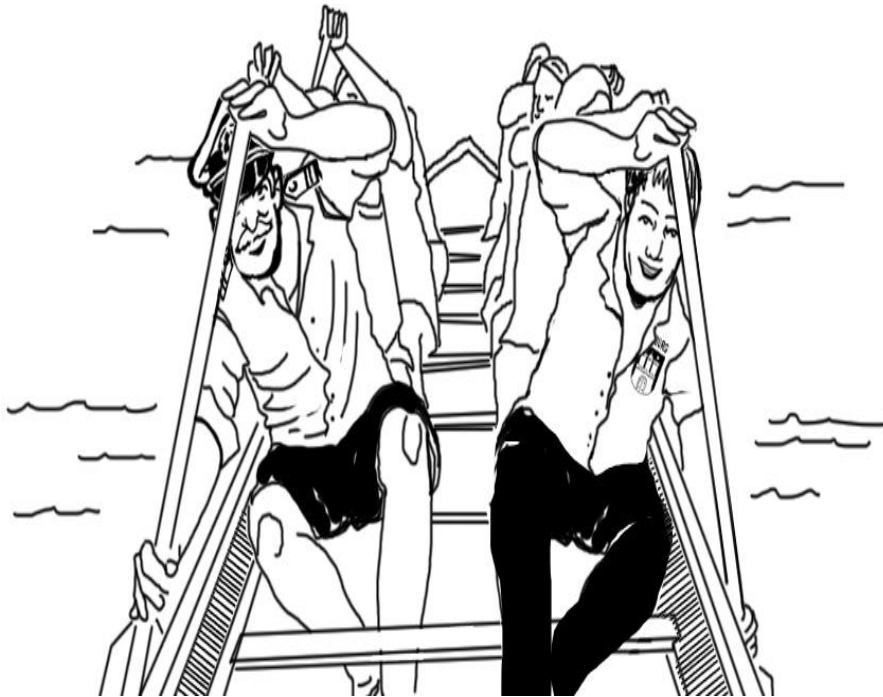
Associated Partner

11. Port of Oslo,
12. Port of Stockholm,
13. Port of Copenhagen
14. ROSMORPORT KALININGRAD
BRANCH
15. Port of Amsterdam
16. Port of Gothenburg
17. ROSMORPORT NORTHWEST
BASIN BRANCH St. Petersburg
18. AIDA Cruises
19. TUI Cruises
20. Senate Chancellery of the Free
and Hanseatic City of Hamburg



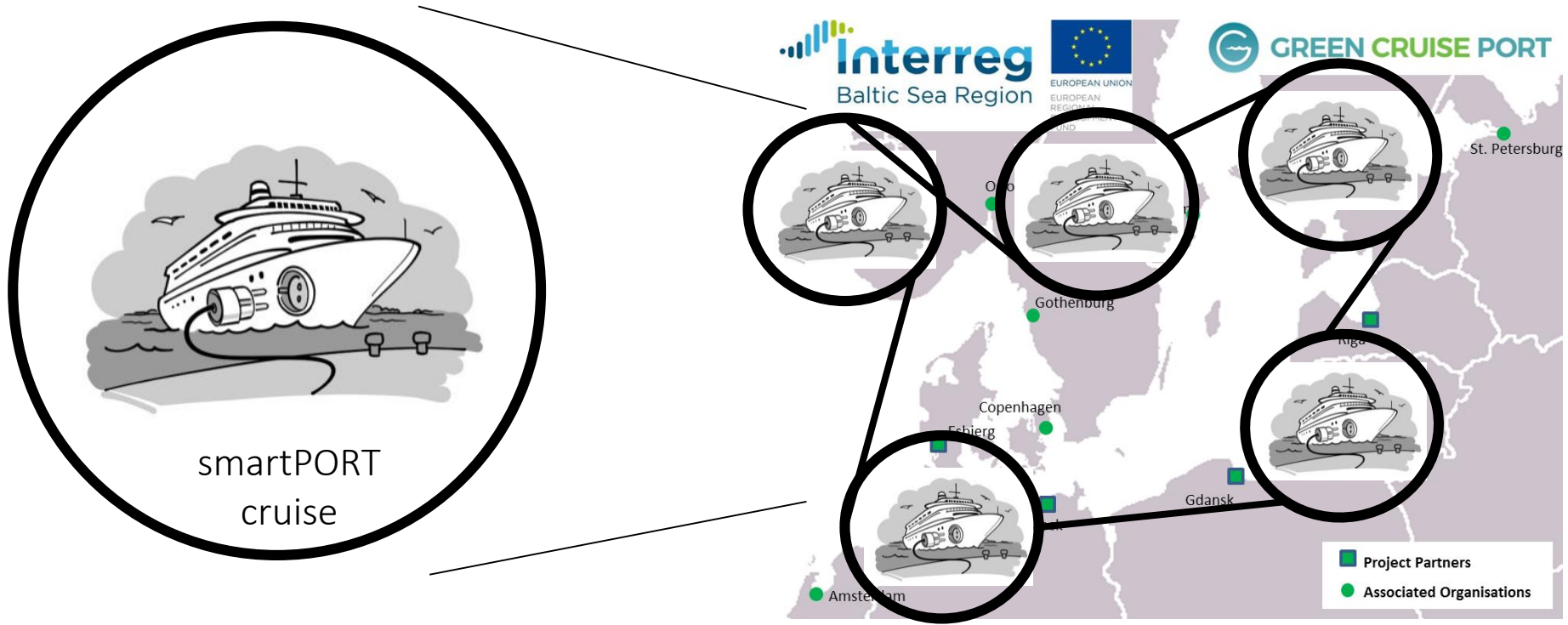
Development of Sustainability in Cruise Port Locations

Cooperation of all stakeholders



Development of Sustainability in Cruise Port Locations

From innovation to standard solution



Development of Sustainability in Cruise Port Locations

Work packages

smart solutions for "greener" cruise ports in in three work packages

- “Sustainable Energy Supply & innovative Emission Reduction”,
- “Cruise Terminal Buildings & innovative Reception Facilities“
- „Maritime and landside Cruise (Terminal) Traffic Links“

Development of Sustainability in Cruise Port Locations

Work package

Sustainable Energy Supply & innovative Emission Reduction”

- Onshore power supply
- Provision of LNG infrastructure
- Usage of scrubber systems/technology
- Research on alternative fuels (e.g. methanol)
- Noise abatement
- Improved ports-cruise lines collaboration

Development of Sustainability in Cruise Port Locations

Work package

“Cruise Terminal Buildings & innovative Reception Facilities“

- Improved waste management
- Innovative reception facilities
- Terminal design for larger vessel sizes
- Integration of „green“ features in terminal buildings
- Smart infrastructure solutions for cruise port newcomer
- Access for elderly and disabled passengers
- Adjustments for social needs of growing crew sizes

Development of Sustainability in Cruise Port Locations

Work package

„Maritime and landside Cruise (Terminal) Traffic Links“

- Nautical challenges due to growing cruise vessel sizes
- Solutions for sustainable mobility in cruise port cities
- Smart Traffic links with the city and the region
- Port due strategies
- Incentives for usage of “green” cruise ports
- Common standards in the measurement of economic effects on cruise port cities and regions

Development of Sustainability in Cruise Port Locations

Project tools

- Opening Conference Hamburg in September 27th 2016
- Closing Conference Tallinn in 2019,
- 11 Workshops – Wrap-ups
- 2 Best Practice Tours (taking place in all BSR countries),
- 12 Basic, Technical and Concept Studys, Business case modells, engineer layout
- Green Cruise Port Action Plan 2030
 - strategic orientation and practical guidance for a smart green cruise port development
 - policy recommendations for a sustainable smart cruise port development

Green Cruise Port opening conference

Statements



- The ports have to be active. They have to bring together all the parties. That is not at ship-owner side
- We need to have a target. Ports can't be preparing themselves for all solutions.
- Our country has high environmental standards, we won't accept lowering them.

- In some ports we have problems with the waste reception facilities, their dimensioning is too small
- We invested in waste reception facilities, but the cruise liners do not use them



We need to talk (my wife)



Ingo Fehrs

Port Development Strategy

Hamburg Port Authority

++49 40 42847 3019

ingo.fehrs@hpa.hamburg.de



EUROPEAN UNION

EUROPEAN
REGIONAL
DEVELOPMENT
FUND

